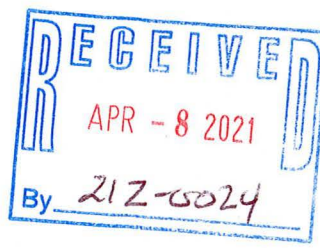


ZONING BOARD OF APPEALS AGENDA

Public Hearing Application # 1

Application # 21Z-0024
2150 Fairport Nine Mi Pt Rd
Albert Meilutis / Metro Mattress

See Pages to Follow



Penfield
Zoning Board of Appeals
Application of - Metro Mattress – Narrative for
A Special Permit for Change of Use
A Special Permit for Signage

Metro Mattress has been operating a store in the Town of Penfield since about 1997. The current store is located at 2164 Penfield Rd. Metro Mattress has entered into a Lease with Mr. Chen to relocate that store to the vacant north endcap in the building at 2150 Fairport Nine Mile Point Rd in Penfield. ATT and CBDepot formerly occupied the space that Mr. Chen will combine into one storefront for Metro Mattress.

Metro Mattress sells mattresses, beds frames, pillows, bed protectors and other related sleep related products. The store hours are Monday through Saturday from 10:00am to 9:00pm and Sunday from 10:00am – 7:00pm. Most of the week Metro Mattress has one employee working in the store. On Friday, Saturday, Sunday and on holidays generally two employees staff the store. During a busy holiday or sales period, we may have as many as four customers in the store at one time. The auto traffic visiting the mattress store is very low at any one snapshot of time.

The previous two tenants, ATT and CBDepot, each had two (2) exterior mounted signs. One sign was on the front of the building facing Fairport Nine Mile Point Rd for each tenant and second sign on the back of the building facing the parking lot for each tenant.

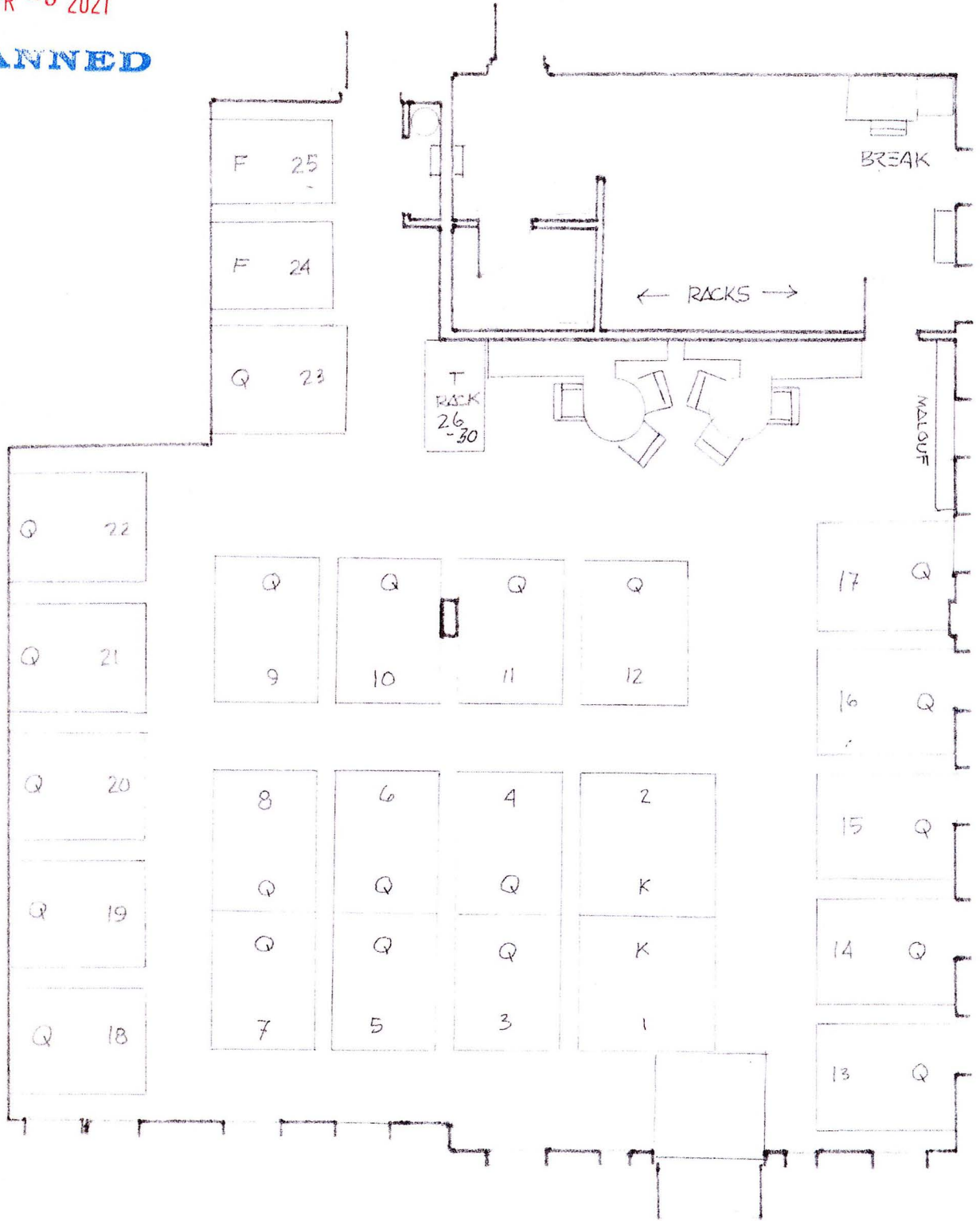
Metro Mattress is requesting two (2) signs on the exterior of the building, one sign will face the road and the second sign will face the parking lot in the rear of the building. Please see the attached drawings for sign design and location. placement. Metro Mattress has modified its logo so that both signs can be easily read and will fit within the building sign panels that were designed for signage when the building was constructed. The LED internally illuminated signs that Metro Mattress uses is in harmony with many other commercial signs in the area. The signs will not create a hazard to other nearby properties nor will they interfere with the public highway.

ENTERED

212-0024

APR - 8 2021

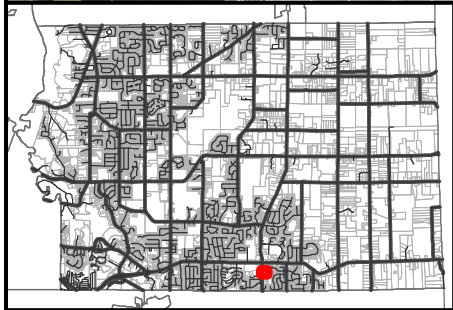
SCANNED



METRO MATTRESS
 Penfield - Bed Layout
 3-15-21



FAIRPORT NINE MILE POINT ROAD



**2150 Fairport Nine Mile Point Rd
Aerial Map**



This aerial photograph was obtained from Google Earth and is provided as a general reference only. It is not intended to be used for any purpose other than that for which it was intended. The user of this map is advised to verify the accuracy of the information shown on this map. The user of this map is advised to verify the accuracy of the information shown on this map.